

Ceiling



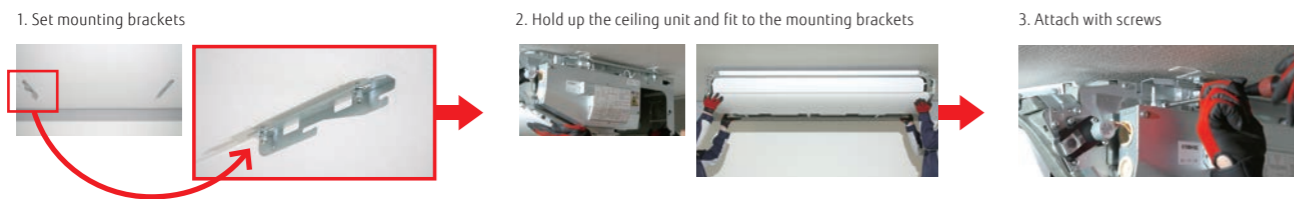
Light Elegant Design

The light-elegant, gently curved surface gives a sense of comfort and well-being.



Easy installation

The indoor unit can be easily installed under the ceiling thanks to the uniquely designed mounting kit.



Easy maintenance

The front panel can be opened without removing it for safe & speedy maintenance.



The drain pan can be removed for cleaning.



Components in the control box can be easily accessed from the wide side opening.



Flexible installation

The drain hose and pipe can be contained in the casing and connected in the right, left, angled, or downward direction.



Link up with a variety of Central Control System (Option)

Centralized control including facilities and equipment in addition to air conditioning is possible by linking up with MODBUS, KNX interfaces.



Model: ABYG18KRTA/ABYG22KRTA/ABYG24KRTA/ABYG30KRTA/ABYG36KRTA/ABYG45KRTA/ABYG54KRTA [3-phase] /ABYG45KRTA [3-phase] /ABYG54KRTA [3-phase]



Specifications

| Model name | Indoor unit | | Outdoor unit | | | | | | 3-phase, ~400 V, 50 Hz | | |
|---------------------------------------|---------------------------------|--------------|-----------------------------|-------------------|-------------------|-------------------|-------------------|-------------------|------------------------|-------------------|-------------------|
| | Outdoor unit | | ABYG18KRTA | ABYG22KRTA | ABYG24KRTA | ABYG30KRTA | ABYG36KRTA | ABYG45KRTA | ABYG36KRTA | ABYG45KRTA | ABYG54KRTA |
| Power Source | | | Single phase, ~230 V, 50 Hz | | | | | | | | |
| Capacity | Cooling | kW | 5.2 (0.9-5.9) | 6.0 (0.9-6.7) | 6.8 (0.9-8.0) | 8.5 (2.8-10.0) | 9.5 (2.8-11.2) | 12.1 (4.0-13.5) | 9.5 (2.8-11.2) | 12.1 (4.0-13.5) | 13.4 (4.5-14.5) |
| | Heating | | 6.0 (0.9-7.5) | 7.0 (0.9-8.0) | 7.5 (0.9-9.1) | 10.0 (2.7-11.2) | 10.8 (2.7-12.7) | 13.5 (4.2-16.2) | 10.8 (2.7-12.7) | 13.5 (4.2-16.2) | 15.5 (4.7-16.5) |
| Input Power | Cooling/Heating | kW | 1.55/1.62 | 1.87/1.95 | 2.14/1.97 | 2.65/2.77 | 2.96/2.88 | 4.22/3.84 | 2.96/2.88 | 4.22/3.84 | 4.45/4.43 |
| | | | 3.35 | 3.21 | 3.18 | 3.21 | 3.21 | 2.87 | 3.21 | 2.87 | 3.01 |
| EER | Cooling | W/W | 3.70 | 3.59 | 3.81 | 3.61 | 3.75 | 3.52 | 3.75 | 3.52 | 3.50 |
| | Heating | | 5.2/4.4 | 6.0/4.8 | 6.8/6.0 | 8.5/8.0 | 9.5/8.7 | - | 9.5/8.7 | - | - |
| Pdesign | Cooling/Heating (-10°C) | kW | 6.2 | 6.1 | 6.2 | 6.1 | 6.37 | - | 6.37 | - | - |
| | | | 4.1 | 4.0 | 4.1 | 4.0 | 4.21 | - | 4.21 | - | - |
| SEER | Cooling | W/W | A++ | A++ | A++ | A++ | A++ | - | A++ | - | - |
| | Heating (Average) | | A+ | A+ | A+ | A+ | A+ | - | A+ | - | - |
| SCOP | Cooling | A | 12.1/12.1 | 12.6/12.6 | 13.6/13.6 | 22.6/22.6 | 28.5/28.5 | - | 10.5/10.5 | 14.0/14.0 | 14.0/14.0 |
| | Heating (Average) | | 293 | 344 | 384 | 486 | 524 | - | 524 | - | - |
| Annual Energy Consumption | Cooling | kWh/a | 1.501 | 1.677 | 2.042 | 2.796 | 2.904 | - | 2.904 | - | - |
| | Heating | | 2.0 | 2.5 | 2.2 | 3.0 | 2.6 | 4.5 | 2.6 | 4.5 | 5.0 |
| Moisture Removal | Indoor (Cooling) | l/h | 38/36/33/31 | 42/37/34/31 | 41/36/32/29 | 45/40/35/32 | 44/40/37/32 | 45/41/39/34 | 44/40/37/32 | 45/41/39/34 | 48/44/41/38 |
| | Indoor (Heating) | | 38/36/33/31 | 42/37/34/31 | 41/36/32/29 | 45/40/35/32 | 44/40/37/32 | 45/41/39/34 | 44/40/37/32 | 45/41/39/34 | 48/44/41/38 |
| Sound Pressure Level | Indoor (Cooling/Heating) | dB(A) | 50/50 | 51/51 | 53/54 | 53/55 | 55/55 | 57/57 | 55/55 | 57/57 | 57/59 |
| | Outdoor (Cooling/Heating) | | 53/53 | 57/57 | 56/56 | 60/60 | 59/59 | 60/60 | 59/59 | 60/60 | 63/63 |
| Sound Power Level | Indoor (Cooling/Heating) | High | 62/62 | 63/63 | 65/66 | 68/69 | 70/70 | 71/71 | 70/70 | 71/71 | 73/73 |
| | Outdoor (Cooling/Heating) | | 840/2,160 | 900/2,240 | 1,230/2,700 | 1,400/3,750 | 1,850/3,750 | 1,900/4,450 | 1,850/3,750 | 1,900/4,450 | 2,100/4,450 |
| Airflow Rate | Indoor/Outdoor (Cooling) | m³/h | 840/1,830 | 900/1,960 | 1,230/2,700 | 1,400/3,750 | 1,800/3,750 | 1,850/4,450 | 1,800/3,750 | 1,850/4,450 | 2,100/4,450 |
| | Indoor/Outdoor (Heating) | | 235 × 1,080 × 705 | 235 × 1,080 × 705 | 235 × 1,390 × 705 | 235 × 1,390 × 705 | 235 × 1,700 × 705 | 235 × 1,700 × 705 | 235 × 1,700 × 705 | 235 × 1,700 × 705 | 235 × 1,700 × 705 |
| Net Dimensions H x W x D | Indoor | mm | 24 (53) | 24 (53) | 31 (68) | 31 (68) | 38 (84) | 38 (84) | 38 (84) | 38 (84) | 38 (84) |
| | Outdoor | | 632 × 799 × 290 | 632 × 799 × 290 | 716 × 820 × 315 | 788 × 940 × 320 | 788 × 940 × 320 | 998 × 940 × 320 | 788 × 940 × 320 | 998 × 940 × 320 | 998 × 940 × 320 |
| Weight | Indoor | kg (lbs) | 36 (79) | 38 (84) | 42 (93) | 52 (115) | 52 (115) | 67 (148) | 53 (117) | 67 (148) | 67 (148) |
| | Outdoor | | 6.35/12.7 | 6.35/12.7 | 6.35/12.7 | 9.52/15.88 | 9.52/15.88 | 9.52/15.88 | 9.52/15.88 | 9.52/15.88 | 9.52/15.88 |
| Connection Pipe Diameter (Liquid/Gas) | | mm | 25/32 | 25/32 | 25/32 | 25/32 | 25/32 | 25/32 | 25/32 | 25/32 | 25/32 |
| | Drain Hose Diameter (I.D./O.D.) | | 30 (20) | 30 (20) | 30 (20) | 50 (30) | 50 (30) | 50 (30) | 50 (30) | 50 (30) | 50 (30) |
| Max. Pipe Length (Pre-Charge) | | m | 20 | 25 | 25 | 30 | 30 | 30 | 30 | 30 | 30 |
| | Max. Height Difference | | -15 to 46 | -15 to 46 | -15 to 46 | -15 to 46 | -15 to 46 | -15 to 46 | -15 to 46 | -15 to 46 | -15 to 46 |
| Operating Range | Cooling | °CDB | -15 to 24 | -15 to 24 | -15 to 24 | -15 to 24 | -15 to 24 | -15 to 24 | -15 to 24 | -15 to 24 | -15 to 24 |
| | Heating | | R32 (675) | R32 (675) | R32 (675) | R32 (675) | R32 (675) | R32 (675) | R32 (675) | R32 (675) | R32 (675) |
| Refrigerant | Type (Global Warming Potential) | kg (CO2eq-T) | 1.02 (0.689) | 1.25 (0.844) | 1.25 (0.844) | 1.90 (1.283) | 1.90 (1.283) | 2.70 (1.823) | 1.90 (1.283) | 2.70 (1.823) | 2.70 (1.823) |
| | Charge | | | | | | | | | | |

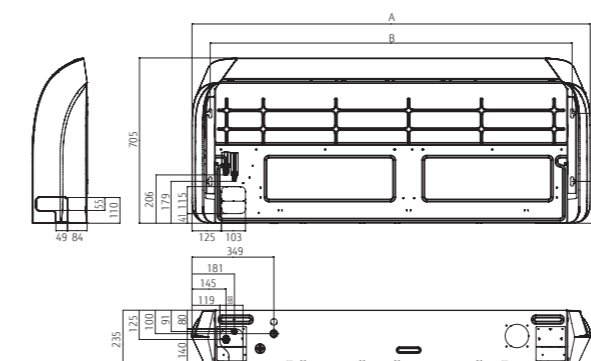
Optional parts

* For optional parts compatibility of Intesis devices, refer to the optional parts compatibility list Page C-046.

| | | | | | |
|--|------------|-----------------------------|-------------------------|--|-----------|
| Compact wired remote controller: | UTY-RCRYZ1 | External connect kit: | UTY-XWZXZG | Network Converter for single split (DC power supply type): | UTY-VTGX |
| Wired remote controller (touch panel): | UTY-RNRYZ5 | WLAN adapter: | UTY-TFSXZ1 | Network Converter for single split (AC power supply type): | UTY-VTGXV |
| Simple remote controller: | UTY-RLRY | Drain pump unit: | UTR-DPB24T | | |
| Simple remote controller (without operation mode): | UTY-RHRY | IR receiver unit: | UTY-LBTYH | | |
| Simple remote controller: | UTY-RSRY | L-type piping kit: | UTP-FX24A (18/22/24) | | |
| External input and output PCB: | UTY-XCSX | External switch controller: | UTP-FX35A (30/36/45/54) | | |
| External input and output PCB box: | UTZ-GXEA | | | | |

Dimensions

(Unit: mm)



| | ABYG18/22KRTA | ABYG24/30KRTA | ABYG36/45/54KRTA |
|---|---------------|---------------|------------------|
| A | 1,080 | 1,390 | 1,700 |
| B | 923 | 1,233 | 1,543 |